

Subcamp area

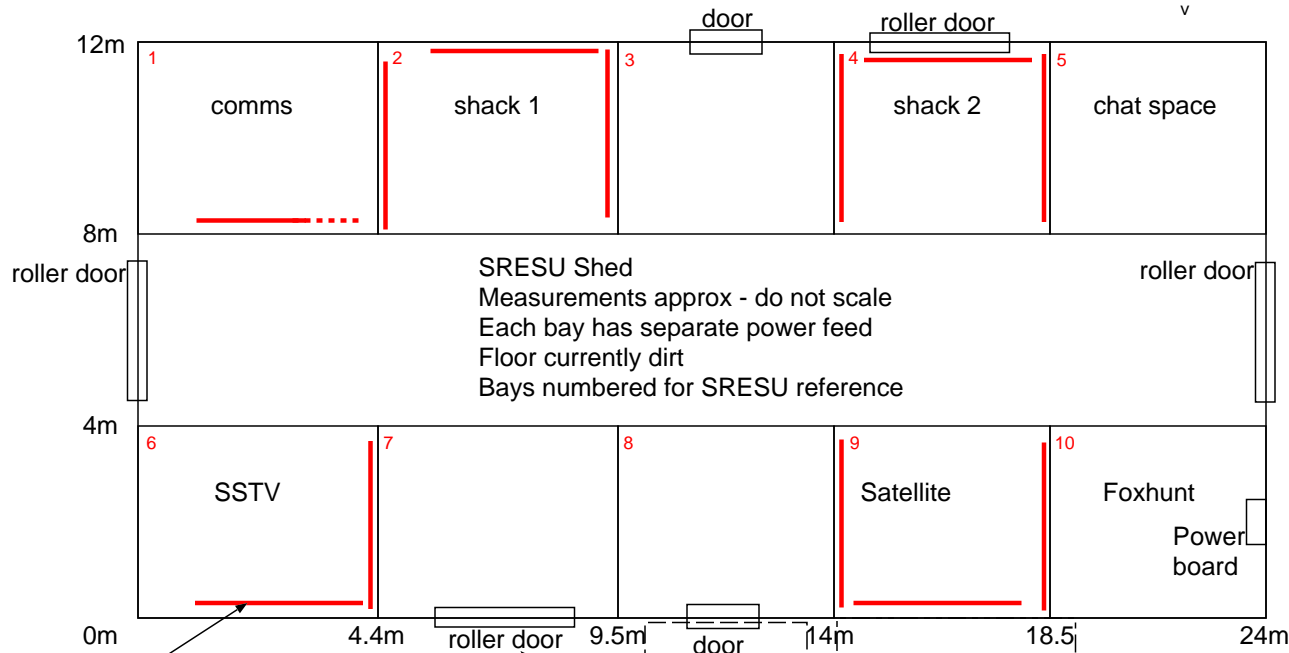
Road

Fence to be installed

Antenna farm

24 m

7m



open sided shed here

12m

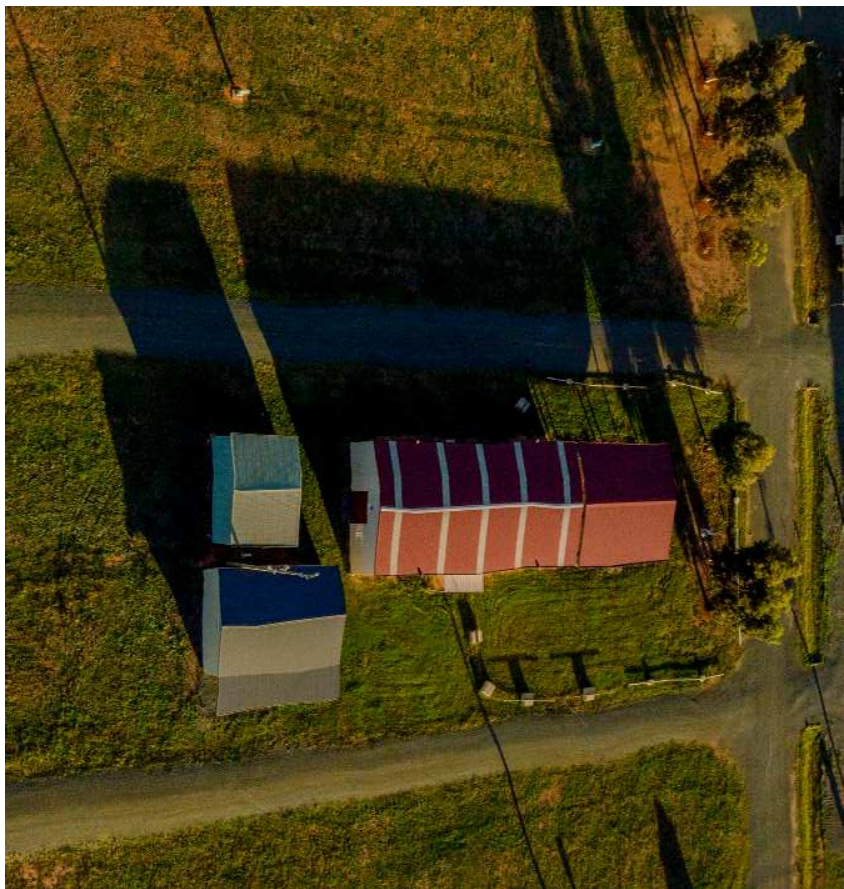
Portable 'walls' from horse pavilion, 3.5m long, 2.2m high can be draped with blankets etc for sound isolation

Entrance?

canopy

Satellite antenna(s)

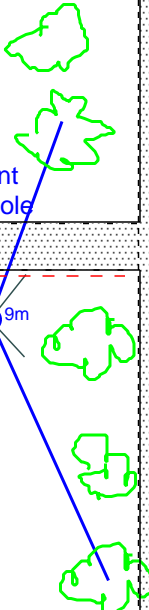
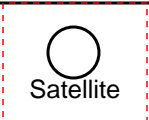
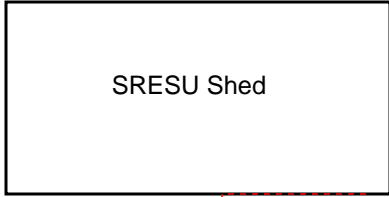
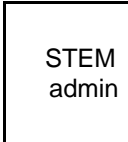
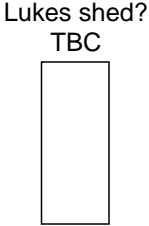
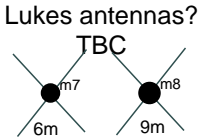
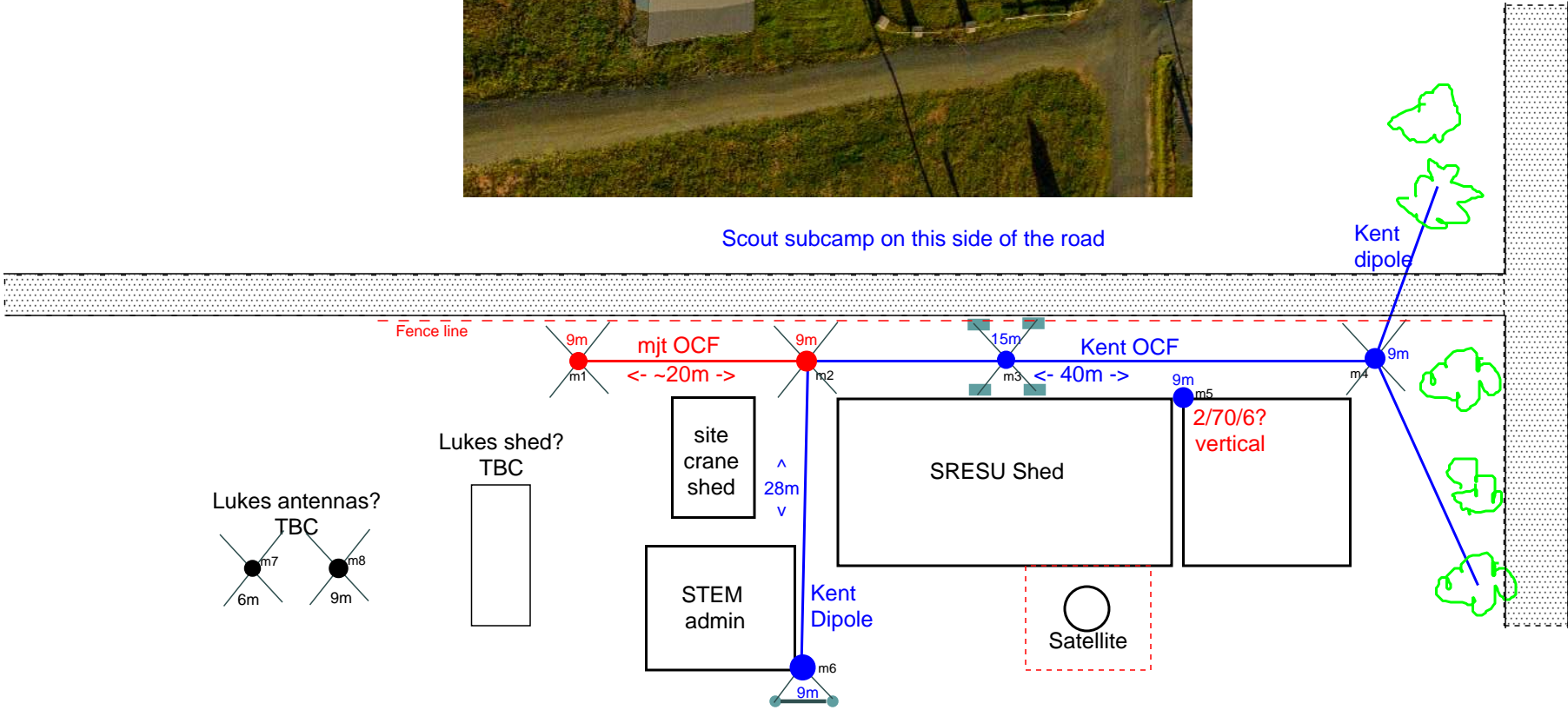
Assembly area



- Mast 1 - 9m mjt pickets & guys
- Mast 2 - 9m mjt pickets & guys
- Mast 3 - 15m kc concrete blocks & guys
- Mast 4 - 9m kc pickets & guys
- Mast 5 - 9m kc strapped to shed post
- Mast 6 - 9m kc strapped to shed post (& guys?)
- Mast 7 - 6m lb pickets & guys
- Mast 8 - 9m lb pickets & guys

- Mast 3 - 4 off concrete blocks
- Mast 9 - maybe 1 off concrete block & rail seats

Scout subcamp on this side of the road



— 1 —

Inside

The inside of the shed

Notes

- shed nominal dimensions 24m x 12m with 5 'bays' / side
- each bay has separate cct breaker for power. 20A / bay ??
- the bay GPOs also wired to outside of shed
- dirt floor - could put down black plastic to stop dust, then cover with green matting from QStore for resilience
- cable exits under roller door OR through small gaps at bottom of the wall OR at top of wall at roof line (daylight visible there)



Figure 1: Bay 1



Figure 2: Bay 2



Figure 3: Bays 4 - 5



Figure 4: Bay 6



Figure 5: QStore green matting - locks together

— 2 —

Antenna farm

Antenna farm side

Notes

- approx 7m from shed to road
- need a fenceline on road edge to keep people out of guyropes/cables etc
- 9m masts to be anchored to pickets in a 1-2 anchor pattern
- 15m mast to be anchored to concrete blocks



Figure 6: Antenna farm alley - SRESU shed and crane shed



Figure 7: 9m Mast - This would be Mast 2 if antenna farm built as proposed



Figure 8: 9m Mast (Mast 2) through to admin shed



Figure 9: End of open shed - dipole tree

— 3 —

Entry Side

Entry side

Notes

- Satellite antenna area to be fenced off
- cabling can enter shed through existing hole in wall ;-)
- mast strapped to admin shed post will need backstays
- backstays could be attached to 'bench weight'



Figure 10: Entrance door(s) and Satellite antenna area - NB GPOs on shed wall



Figure 11: Entrance door(s)



Figure 12: Admin shed post and Satellite antenna area

— 4 —

Weights



Figure 13: Concrete block - weights for 15m mast - 3m strop



Figure 14: Alternate weight



Figure 15: 'Bench Weight' - Admin mast backstays?

— 5 —

Walls

Wall panels from horse pavilion

Notes

- 3.5m long x 2.2m high
- pin together
- some are solid panel to top, some are solid for 1.3m then rails to top
- gate panels available
- hang blankets over these for sound deadening



Figure 16: horse walls



Figure 17: horse wall - gate